

DWG NO. 177
SHEET NO. 1

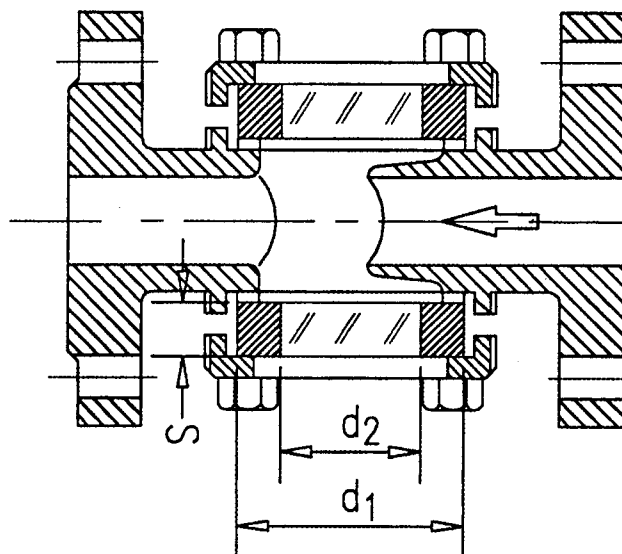


SIGHT GLASS FUSED TO METAL CONFORMING TO DIN 7079

GLASS: BOROSILICATE (DIN 7080)

PRESSURE/TEMPERATURE CHARTS FOR EACH DISC SIZE IS AVAILABLE UPON REQUEST

NOTE: FM must authorize all changes to drawings



ANSI NOMINAL SIZE	ANSI PRESSURE CLASS DISC SIZE								
	150 PSI			300 PSI			600 PSI		
	d1	d2	S	d1	d2	S	d1	d2	S
1/2"	1.77 (45)	0.98 (25)	0.39 (10)	1.77 (45)	0.98 (25)	0.39 (10)	1.77 (45)	0.98 (25)	0.47 (12)
3/4"	1.77 (45)	0.98 (25)	0.39 (10)	1.77 (45)	0.98 (25)	0.39 (10)	1.77 (45)	0.98 (25)	0.47 (12)
1"	1.97 (50)	0.98 (25)	0.39 (10)	1.97 (50)	0.98 (25)	0.39 (10)	1.97 (50)	0.98 (25)	0.47 (12)
1 1/2"	2.60 (66)	1.38 (35)	0.47 (12)	2.60 (66)	1.38 (35)	0.47 (12)	2.60 (66)	1.38 (35)	0.59 (15)
2"	2.99 (76)	1.57 (40)	0.47 (12)	2.99 (76)	1.57 (40)	0.47 (12)	2.99 (76)	1.57 (40)	0.67 (17)
3"	4.92 (125)	2.56 (65)	0.79 (20)	4.92 (125)	2.56 (65)	0.79 (20)	4.92 (125)	2.56 (65)	1.06 (27)
4"	5.71 (145)	2.76 (70)	0.79 (20)	5.71 (145)	2.76 (70)	0.79 (20)	5.71 (145)	2.76 (70)	1.18 (30)
6"	8.58 (218)	3.94 (100)	0.98 (25)	8.58 (218)	3.94 (100)	1.18 (30)	8.58 (218)	3.94 (100)	1.57 (40)
8"									

RING MATERIAL	MAXIMUM WORKING TEMP.
Carbon Steel (1.0570)	536°F (280°C)
Duplex Stainless Steel (1.4462)	536°F (280°C)
Hastelloy C-4 (2.4610)	536°F (280°C)

CHANGE	DESCRIPTION OF CHANGE	DATE	NAME

MANUFACTURED BY:
Herberts Industrieglas GmbH & Co. KG
GEWERBESCHULSTRASSE 72
D-42289 WUPPERTAL GERMANY

METAGLAS®
SIGHT GLASS DISC
FOR L.J. STAR VISUAL FLOW INDICATORS OR SIMILAR

DESIGNED	DATE	NAME
CHECKED	Feb. 1996	[Signature]

L. J. STAR INCORPORATED
P. O. BOX 280
FREDONIA, N. Y. 14063
TELEPHONE 716-366-0508
FAX 716-366-0509