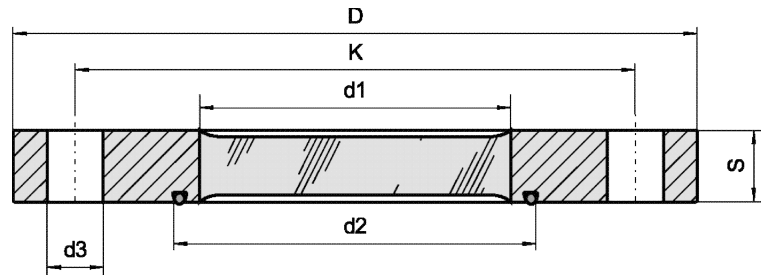
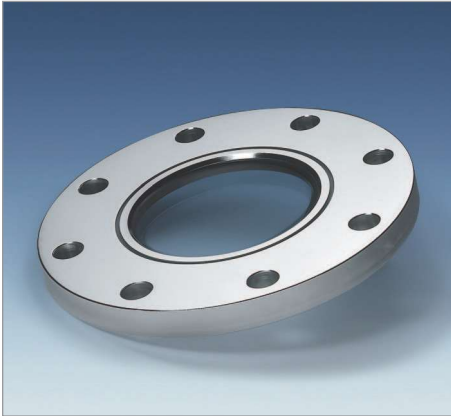


METAGLAS® Bolt-on Sight Glass for Sterile Applications



Applications

- Aseptic and sanitary applications
- Base flange to DIN 28117 or similar
- Weld neck with flat face

Material certificates

- Certificate of Conformity to EN 10204-3.1 or 3.2

Operating conditions

- Pressure: -1 to 16 bar
- Temperature: see table

O-Ring

- AS 568 A / B.S. 1806

| Ring materials | Operating temperature |
|----------------|-----------------------|
| 1.4462 | -40°C to +280°C |
| 2.4602 | -80°C to +300°C |
| 2.4605 | -80°C to +300°C |
| 2.4610 | -80°C to +300°C |
| 2.4610 | -80°C to +300°C |

Technical data

Manufactured and tested to:

- Directive for pressure equipment 2014/68/EU, Module H (DIN/EN/ISO 9001)
- AD2000 Standards W0/TRD 100
- Sight glass fused to metal conforming to DIN 7079
- Materials to VdTÜV specifications and the DIN/EN designated standards
- Glass: Borosilicate to DIN 7080 / DIN 7079

Advantages

- Reliability against total failure. The possibility of unexpected rupture is excluded
- Effortless cleaning for sterile applications
- Flush glass/metal border on outer side for easy cleaning
- Maximum viewing area

Approvals

- TÜV-Approval in accordance with the governing standards (for pressure vessels) (With Duplex Stainless Steel (DIN 1.4462))

Important

- Only for use with parallel flat face flange without seal recess.
- We therefore recommend the use of Belleville spring washers, 2 pcs. for each connection hole. (follow the assembly instructions)

| NW | PN | D | K | S | d1 | d2 | d3 | Connection holes | O-Ring | Spring washers |
|-----|----|-----|-----|----|-----|-----|----|------------------|---------------|------------------|
| 50 | 16 | 165 | 125 | 21 | 50 | 66 | 18 | 4 | 58,74 x 3,53 | 31,5/16,3 x 1,25 |
| 65 | 16 | 185 | 145 | 25 | 70 | 86 | 18 | 4 | 78,97 x 3,53 | 31,5/16,3 x 1,25 |
| 80 | 16 | 200 | 160 | 25 | 80 | 96 | 18 | 8 | 88,50 x 3,53 | 31,5/16,3 x 1,25 |
| 100 | 16 | 220 | 180 | 25 | 90 | 116 | 18 | 8 | 107,5 x 3,53 | 31,5/16,3 x 1,25 |
| 125 | 16 | 250 | 210 | 27 | 110 | 141 | 18 | 8 | 132,9 x 3,53 | 31,5/16,3 x 1,25 |
| 150 | 16 | 285 | 240 | 30 | 130 | 165 | 22 | 8 | 158,34 x 3,53 | 40/20,4 x 1,5 |
| 200 | 10 | 340 | 295 | 31 | 160 | 208 | 22 | 8 | 202,8 x 3,53 | 40/20,4 x 1,5 |